

Tudor Plaza

2,435 sq. ft. Office Suite Available
for Sublet July 15, 2007



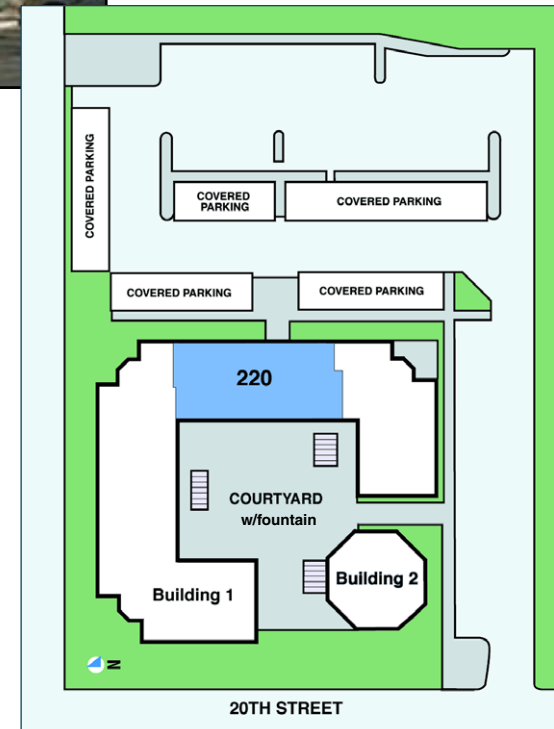
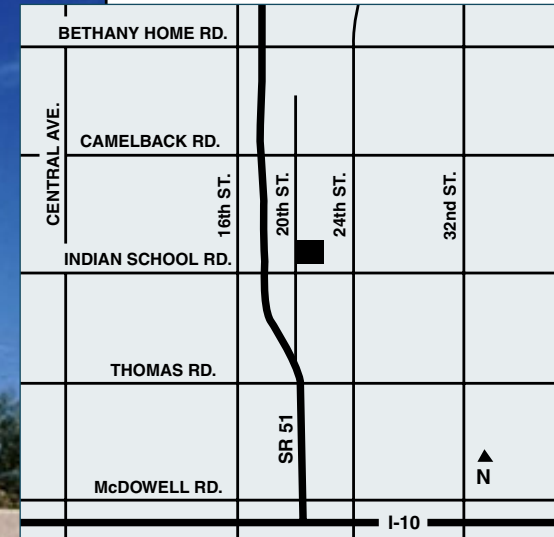
4105 North 20th Street, Phoenix, AZ 85016

- Exceptional sublet opportunity at fixed, below market rate through January 2010
- Highly efficient space plan with options to tailor to tenant's needs
- Offices overlook interior courtyard with fountain amid fully landscaped complex
- Existing furniture included
- Located 1/2 mile off SR 51, within 5 minutes of Camelback Esplanade, and only 10 minutes from downtown and Sky Harbor International Airport
- Abundant visitor and tenant parking

\$15 / sq. ft. Full Service Lease Rate For Term

PRIN
INVESTMENTS
Real Estate Group

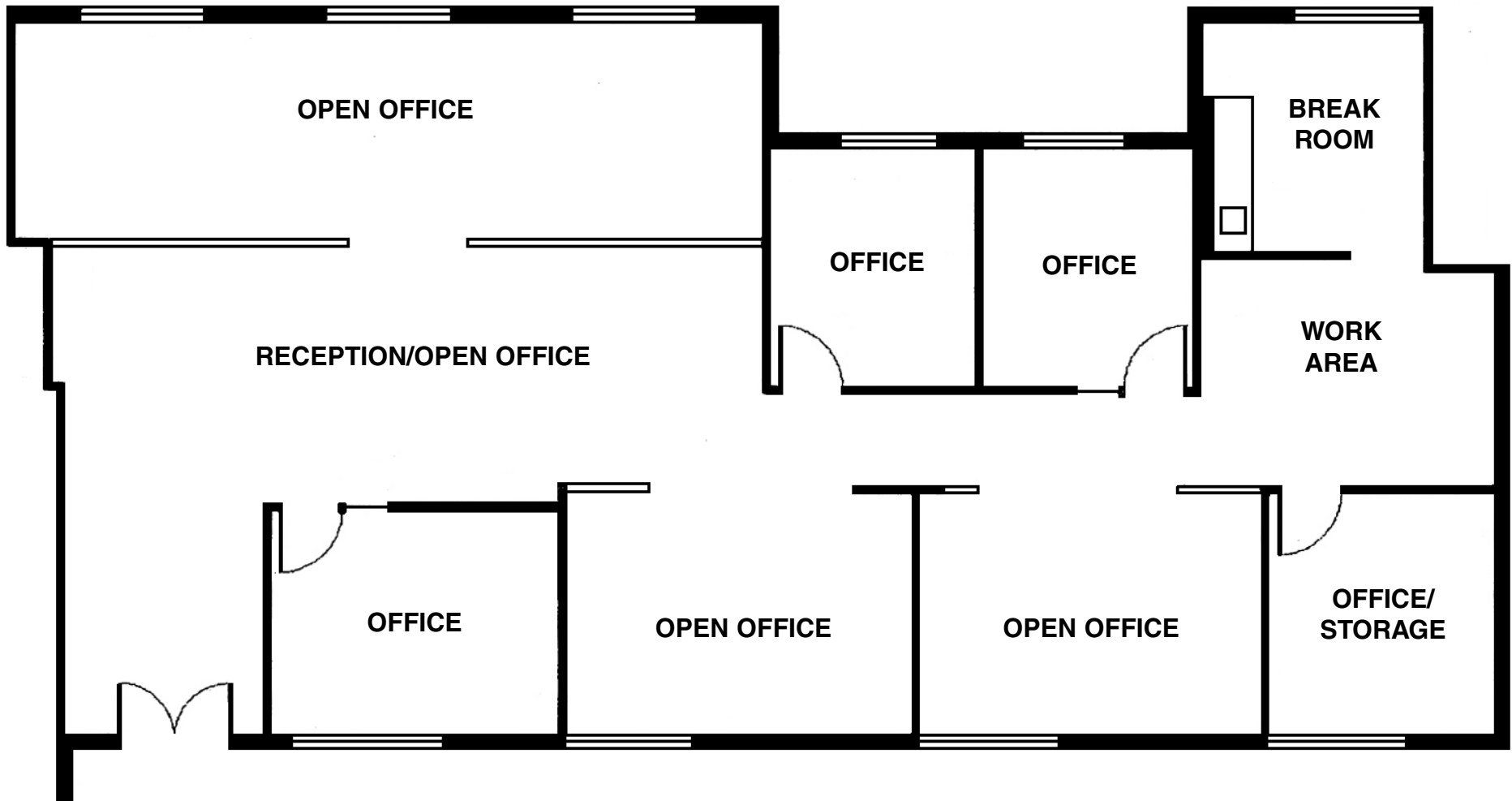
For additional information, contact: **Steve Strand**
PRIN Investments Real Estate Group • 602.840.1003
Steve.Strand@prinreg.com



Tudor Plaza

4105 North 20th Street, Phoenix, AZ 85016

2,435 sq. ft. Office Suite Available
for Sublet July 15, 2007



For additional information, contact: **Steve Strand**
PRIN Investments Real Estate Group • 602.840.1003
Steve.Strand@prinreg.com